



CSRS-PPP 3.45.0 (2020-07-08)



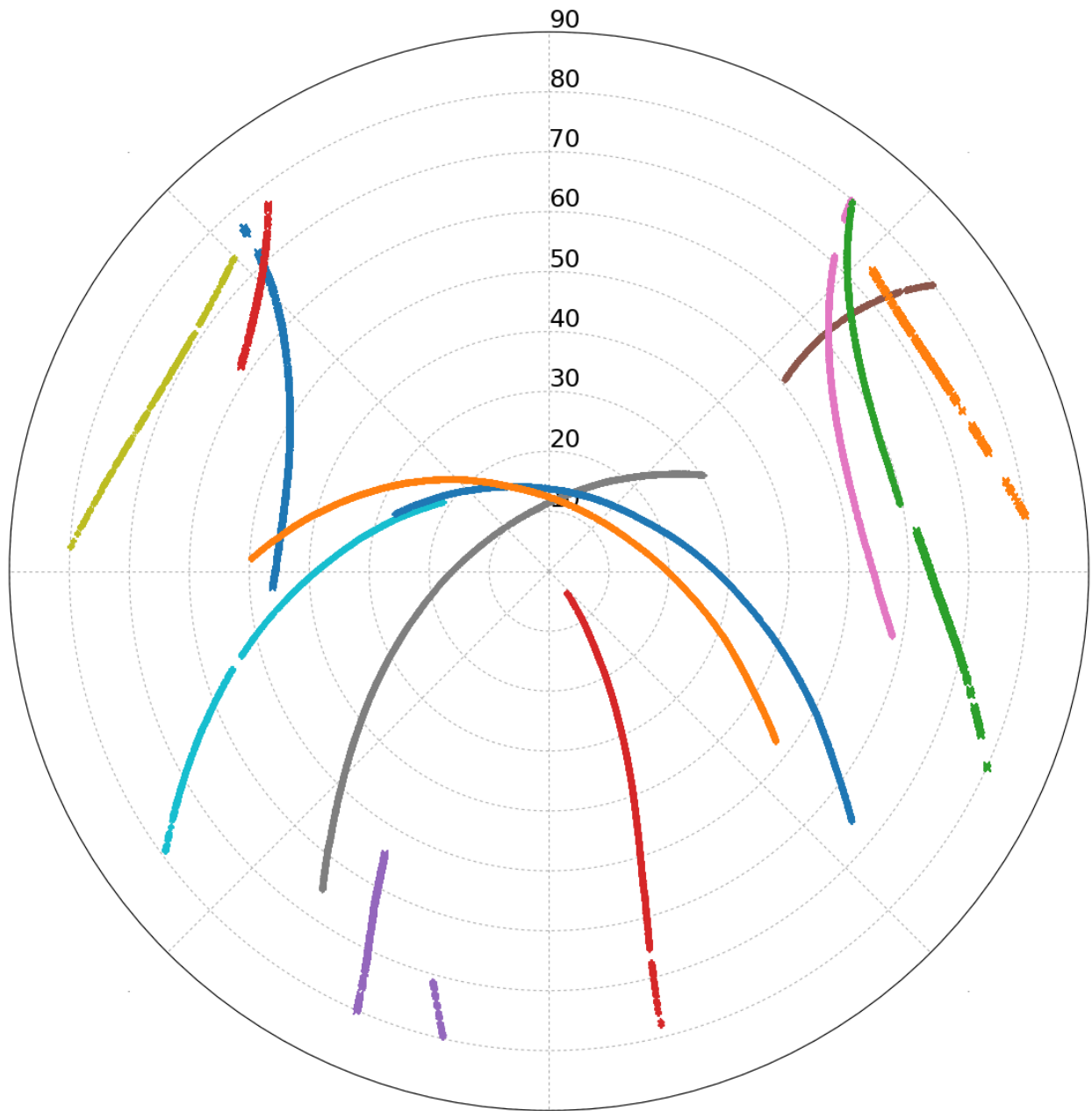
Sample_Kinematic.200

Data Start		Data End	Duration of Observations
2020-08-01 13:35:13.00		2020-08-01 17:21:35.00	3:46:22
Processing Time		Product Type	
13:58:03 UTC 2020/10/16		Final	
Observations	Frequency		Mode
Phase and Code	Double		Kinematic
Elevation Cut-Off	Rejected Epochs	Fixed Ambiguities	Estimation Steps
7.5 degrees	5.81 %	0.00 %	1.00 sec
Antenna Model	APC to ARP		ARP to Marker
ASH701975.01A	L1 = 0.038 m L2 = 0.055 m		H:1.770m / E:0.000m / N:0.000m

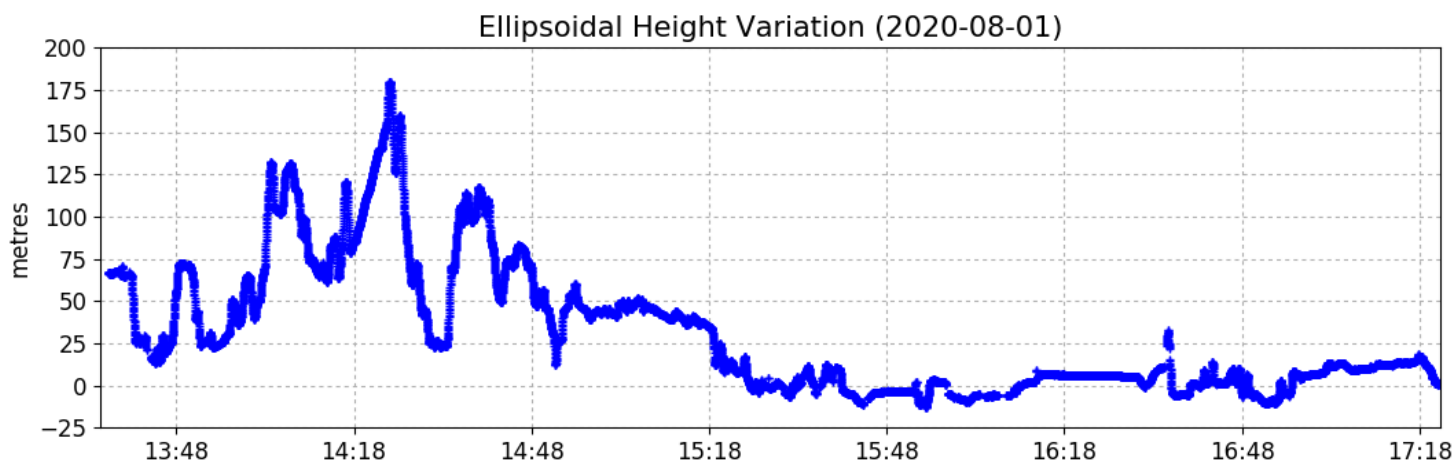
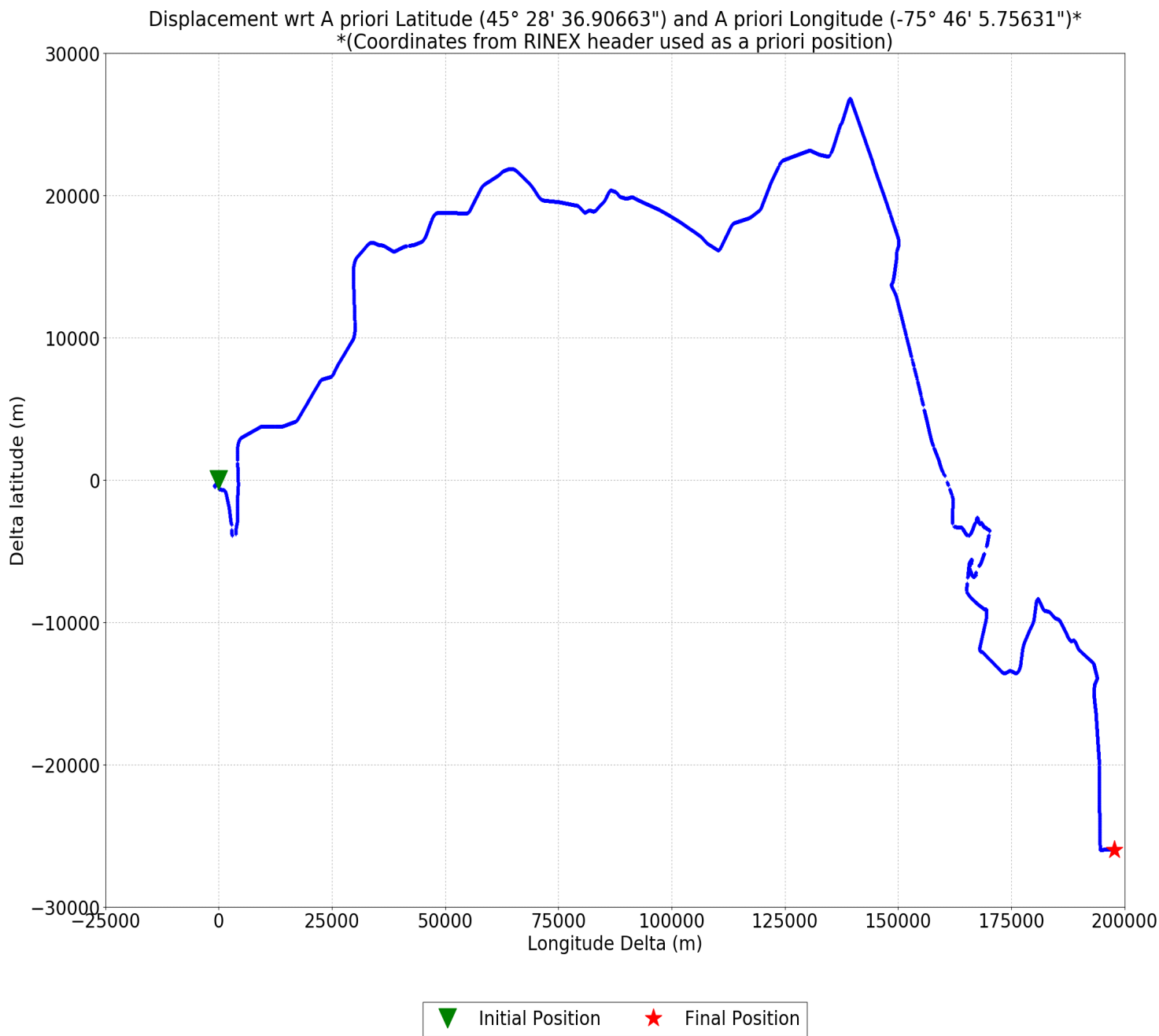
(APC = antenna phase center; ARP = antenna reference point)

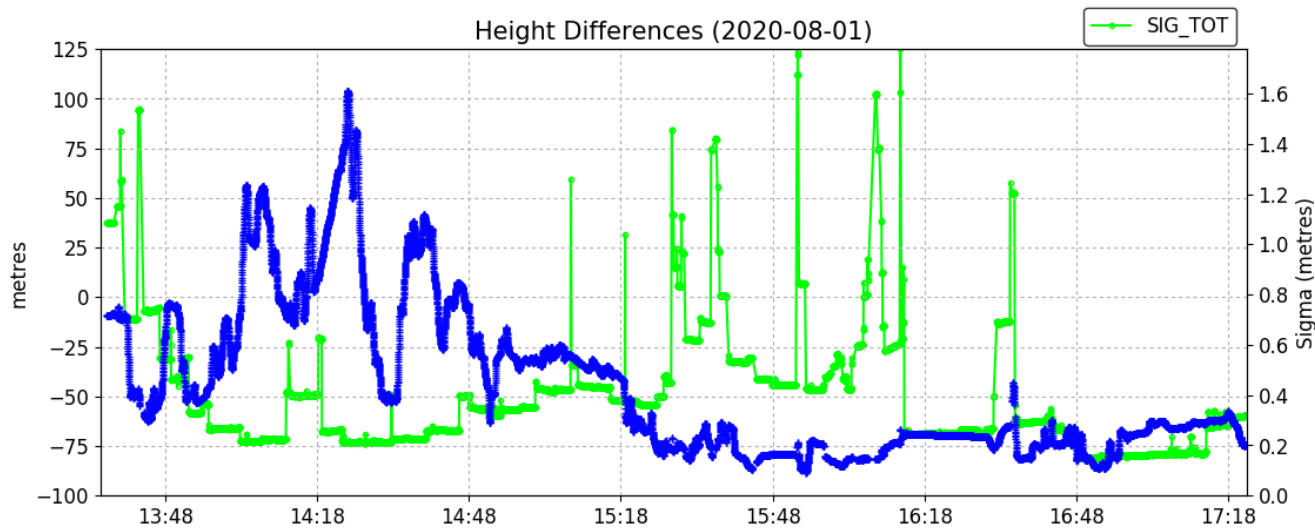
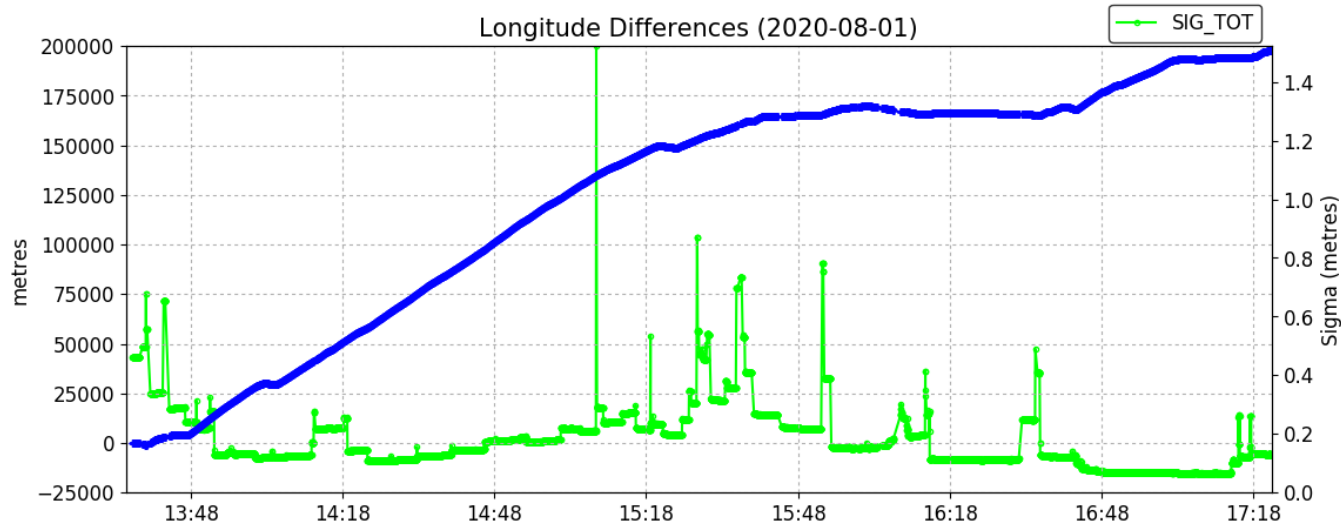
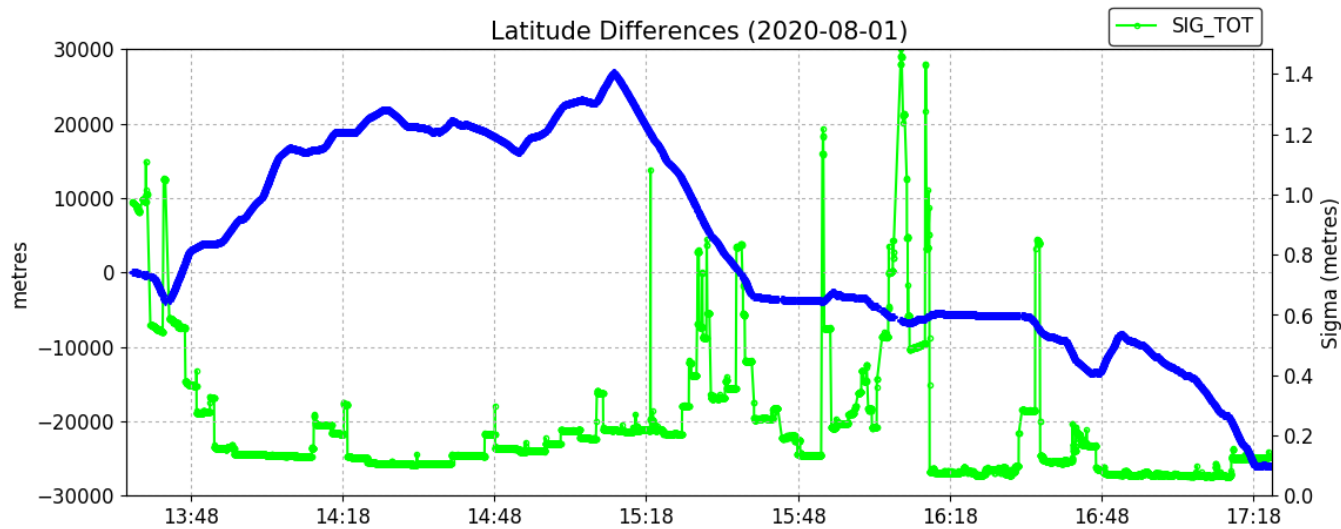
**Estimated NAD83 Positions for Sample_Kinematic.200 can be found in
Sample_Kinematic.pos**

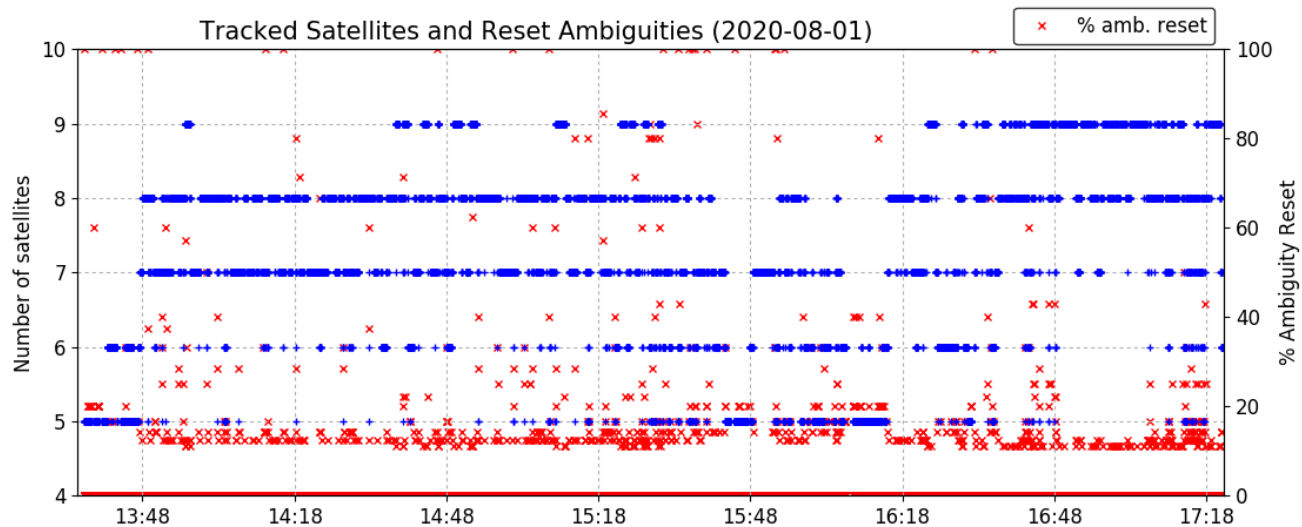
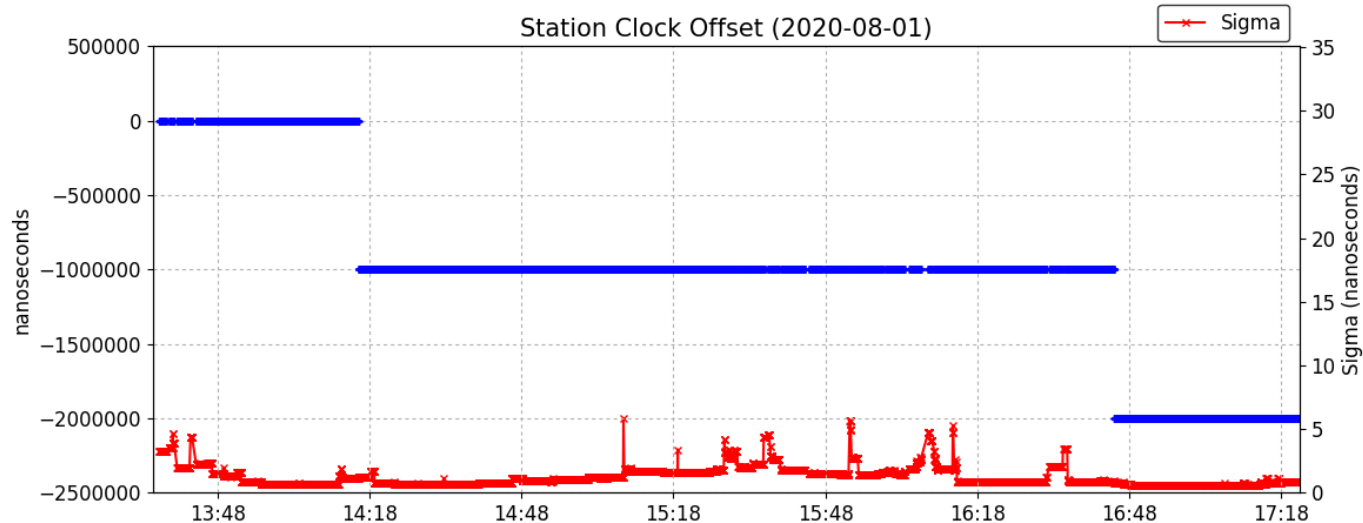
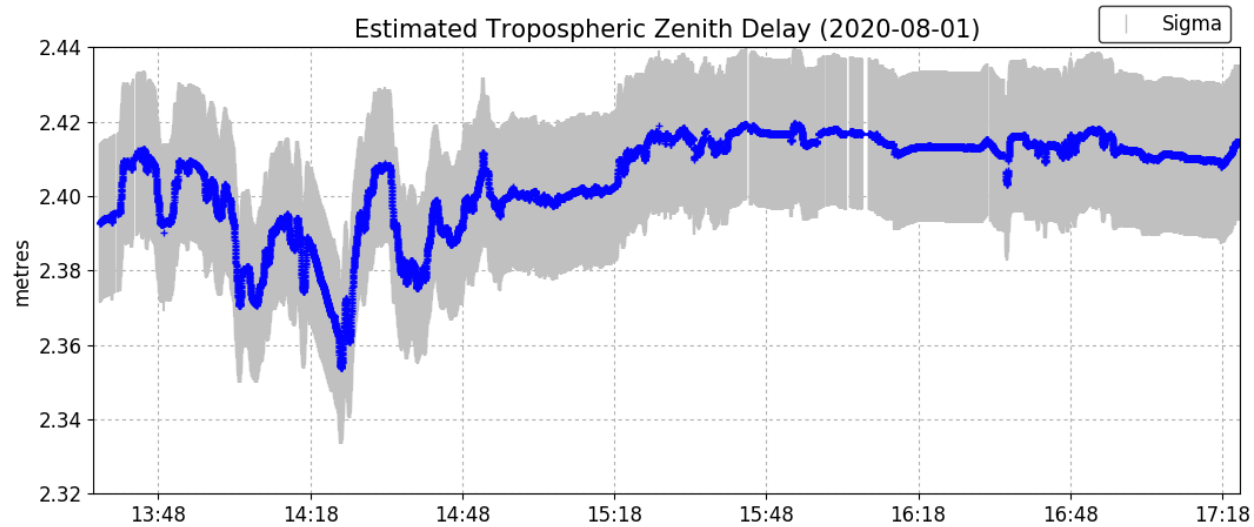
Satellite Sky Distribution

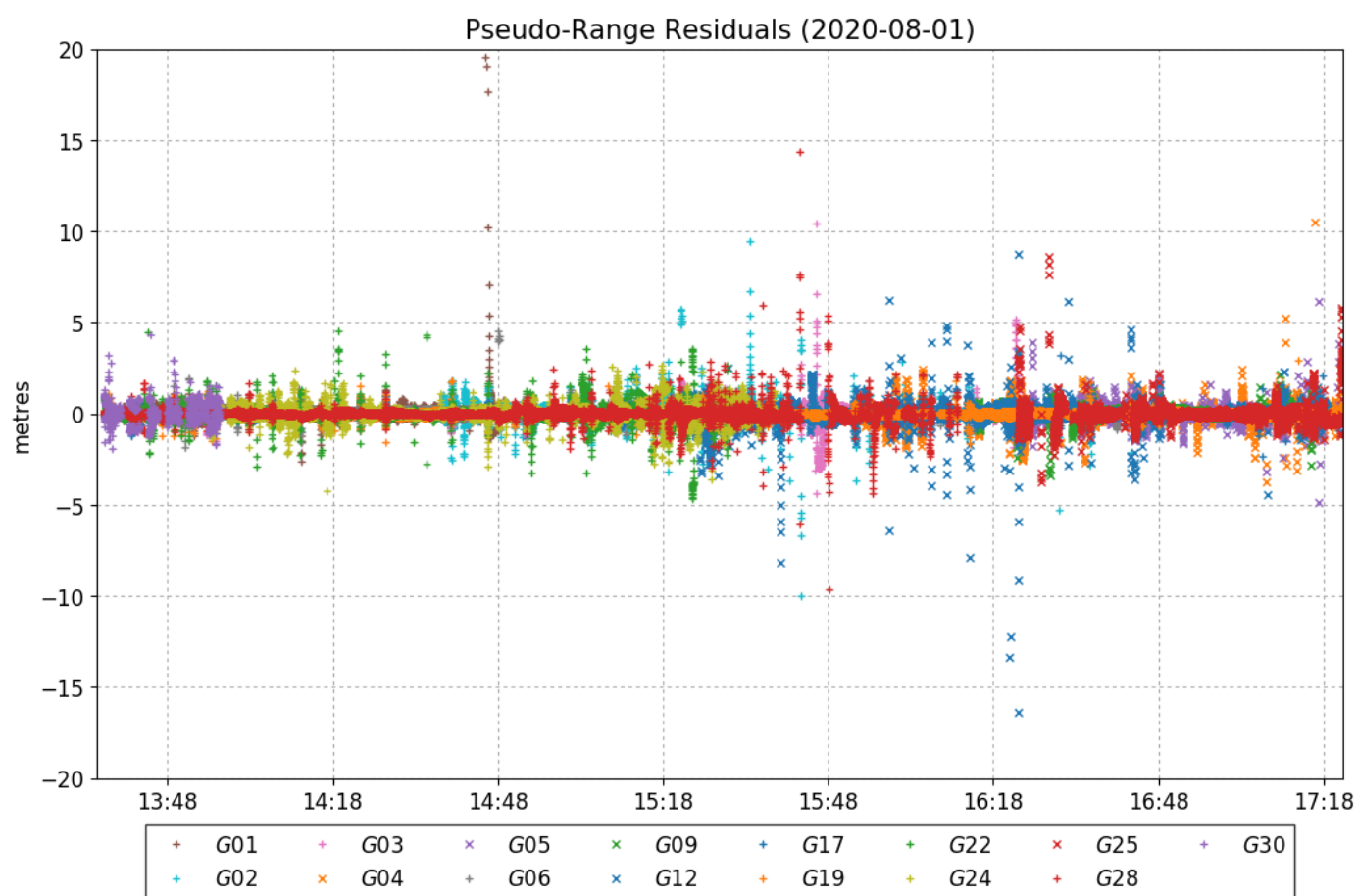
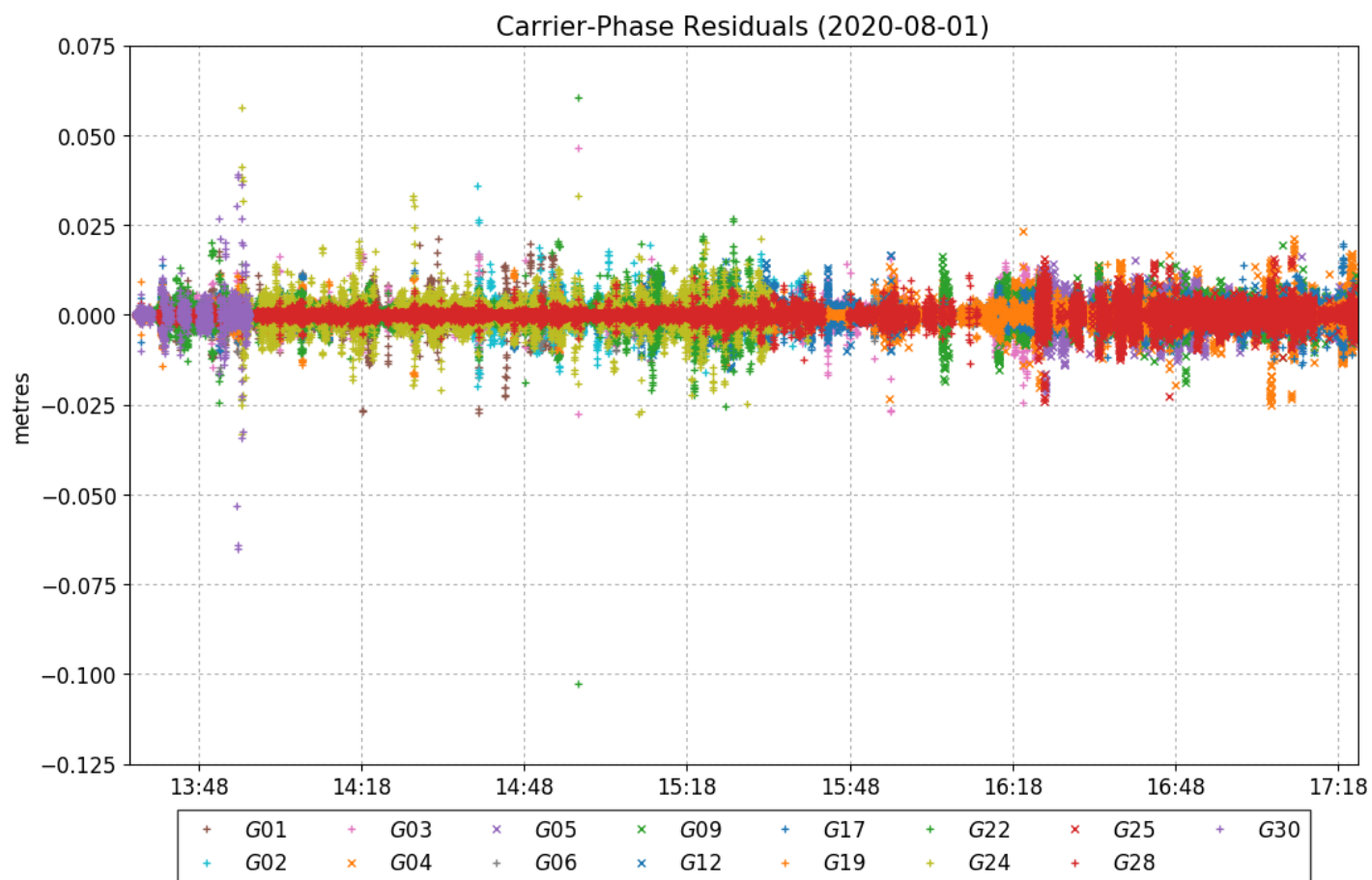


+	G01	×	G04	×	G09	+	G19	+	G24	+	G28
+	G02	×	G05	×	G12	+	G22	×	G25	+	G30
+	G03	+	G06	+	G17						

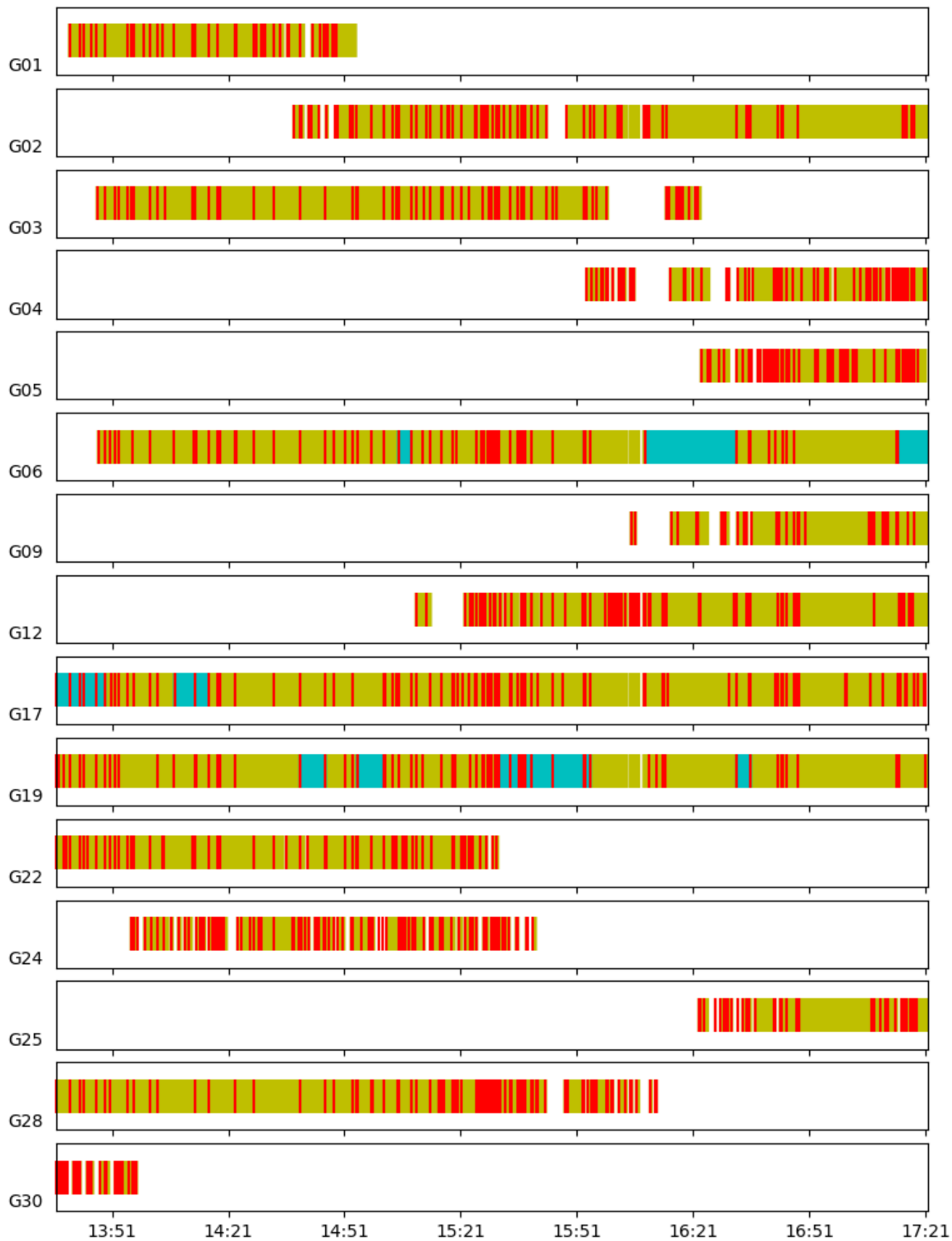
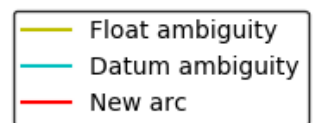








Phase Ambiguity Status (2020-08-01)



~~~ Disclaimer ~~~

Natural Resources Canada does not assume any liability deemed to have been caused directly or indirectly by any content of its CSRS-PPP online positioning service.

If you have any questions, please feel free to contact:

**Geodetic Integrated Services
Canadian Geodetic Survey
Surveyor General Branch
Natural Resources Canada
Government of Canada
588 Booth Street, Room 334
Ottawa, Ontario K1A 0Y7
Phone: 343-292-6617**

Email: nrcan.geodeticinformation-informationgeodesique.rncan@canada.ca



**Natural Resources
Canada**

**Ressources naturelles
Canada**

Canada